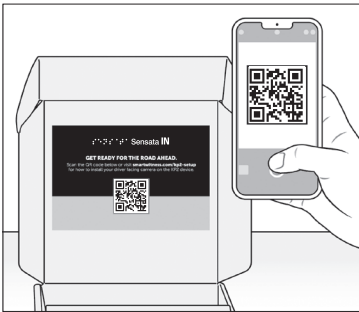
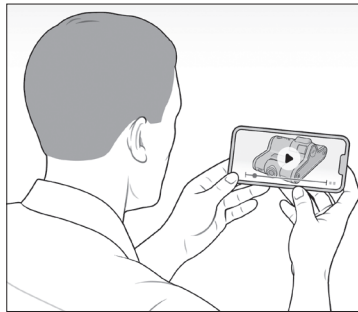


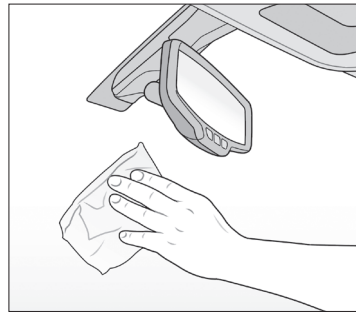
**1. Review the package contents.**



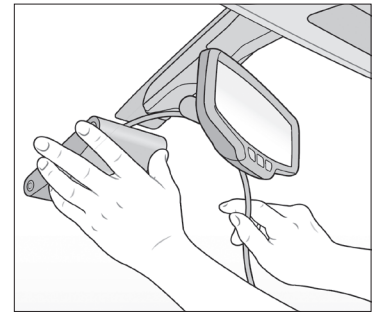
**2. Scan the QR code inside the box for a detailed installation video, spec sheet and user guide.**



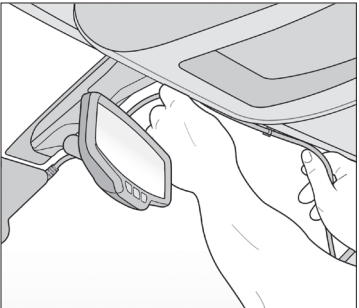
**3. Watch the *installation video*. Refer to proper camera installation guidelines [here](#).**



**4. Use wipe to clean the window. Allow time to dry. To determine compliant device placement, check local regulations.**



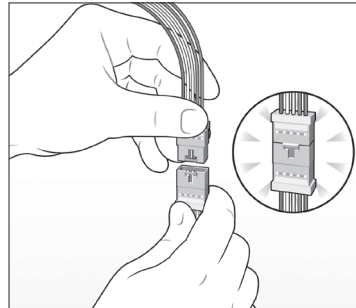
**5. Remove backing. Press evenly to ensure the mounting bracket's adhesive is flush against the glass. Hold to window for 30 seconds.**



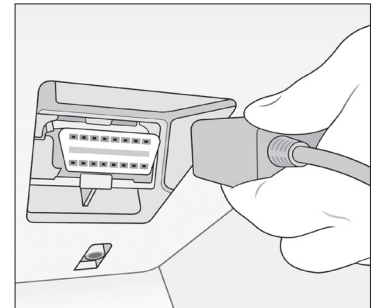
**6. Remove adhesive and apply cable clips to windscreen. Slide the bracket power cable into clips.**



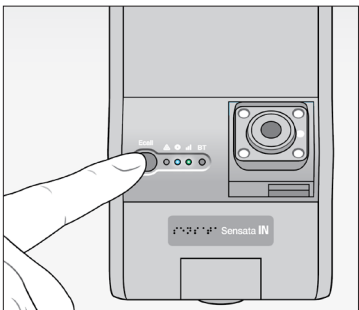
**7. Tuck cable behind weather stripping, and push stripping in to secure it.**



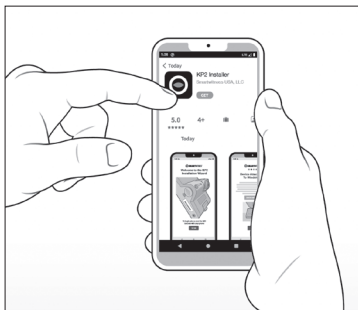
**8. At the end of the bracket cable (A), connect the terminal to the smaller end of the adapter cable (F).**



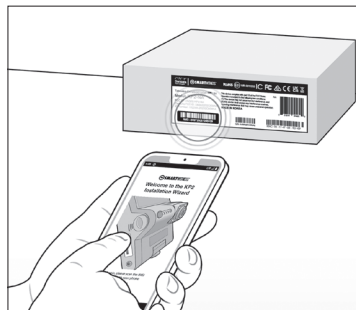
**9. Plug end of OBDII adapter cable into vehicle's OBDII port. Ensure vehicle is on a flat surface for G-sensor and device calibration.**



**10. Turn on vehicle. Check that blue and green lights remain on after 5 minutes. If not, an error occurred. Press small, black button for 3 seconds. A beep confirms G-sensor calibration.**

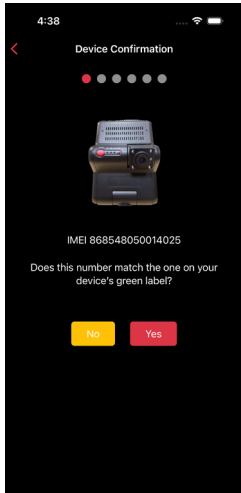


**11. Scan the QR code above, and download the iOS or Android KP2 installation app.**

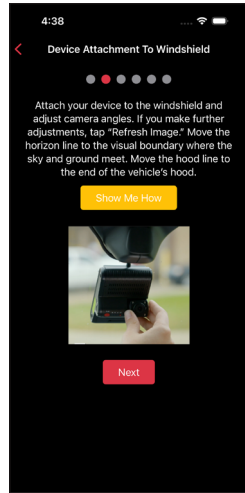


**12. Open the KP2 installation app, and scan the IMEI code on the box's label. Follow the device configuration prompts.**

**Proceed to next page for device calibration >**



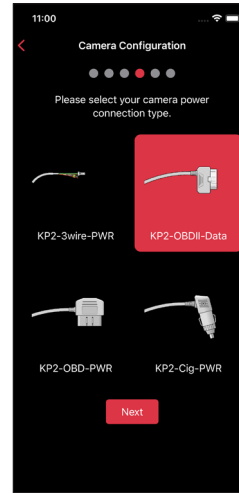
**13.** Ensure the IMEI code in the app matches your device's IMEI.  
If there isn't a match, tap **No** and contact Sensata INSIGHTS support.  
If there's a match, tap **Yes** to continue.



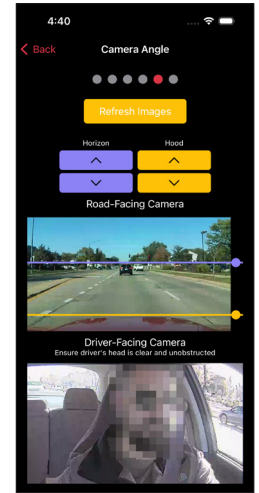
**14.** Read the instructions to understand more about your vehicle's "Horizon" and "Hood" lines.  
Tap **Show Me How** for a brief video walk-through of the device attachment process.



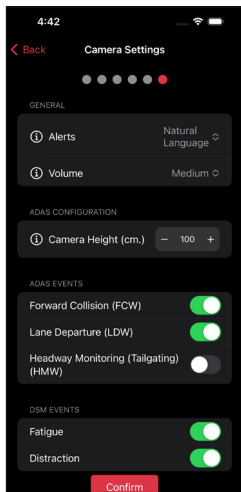
**15.** Select your KP2 camera configuration.  
Choose the driver's side of the vehicle.  
Tap **Next** to select your power connection type.



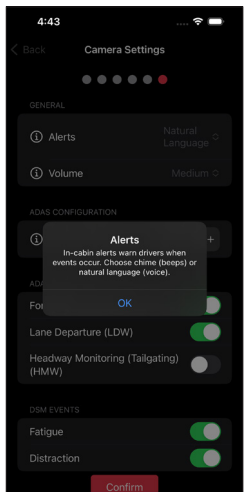
**16.** Select the power adapter cable you used during installation to connect your device to the vehicle.  
Tap **Next** to set your vehicle's "Horizon" and "Hood" lines.



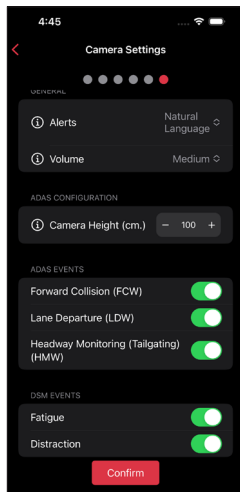
**17.** If you adjust either camera, tap **Refresh Images** to update road- and driver-facing camera images.  
Use the arrows to adjust your vehicle's "Horizon" and "Hood" lines.  
Ensure your "Hood" line is in the bottom one-fourth of your image.  
Scroll down and tap **Next** to save the "Horizon" and "Hood" lines.



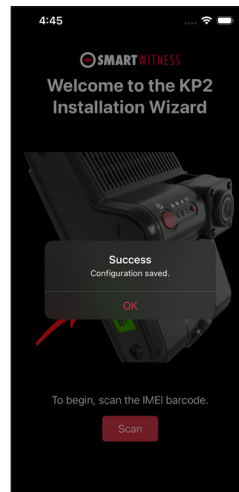
**18.** Choose preferences for in-cabin alerts, an alert's volume level or activation of different ADAS and DSM events.



**19.** If you're unaware of a setting's function, tap the **info** icon to learn more.  
Pay close attention to **Camera Height**. Enter an **even interval** value (e.g., 190 cm), not an odd interval value (e.g., 205 cm, 213 cm).



**20.** After you've made changes and activated the appropriate features, tap **Confirm** to save your configuration.



**21.** On the home screen, you'll see a success message validating your saved configuration.

**Congratulations! Your KP2 is now ready to go!**