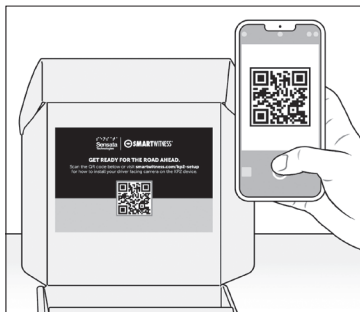
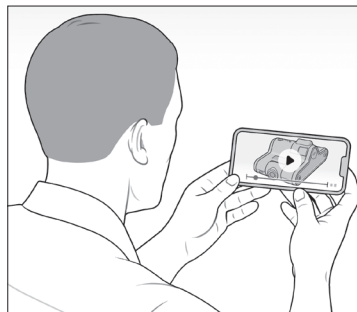


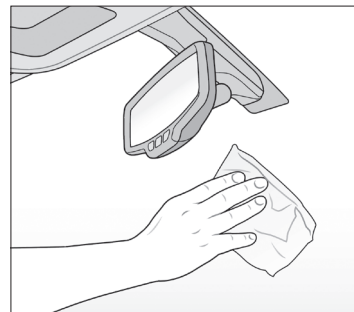
1. Review the package contents.



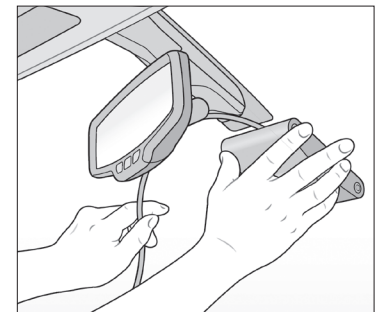
2. Scan the QR code inside the box for a detailed installation video, spec sheet and user guide.



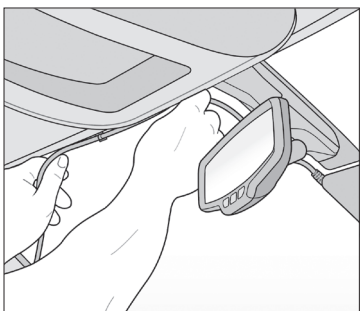
3. Watch the *installation video*. Refer to proper camera installation guidelines [here](#).



4. Use wipe to clean the window. Allow time to dry. To determine compliant device placement, check local regulations.



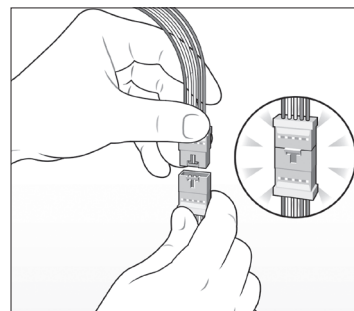
5. Remove backing. Press evenly to ensure the mounting bracket's adhesive is flush against the glass. Hold to window for 30 seconds.



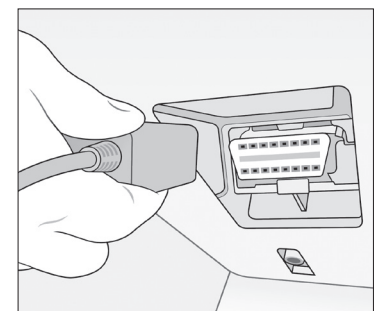
6. Remove adhesive and apply cable clips to windshield. Slide the bracket power cable into clips.



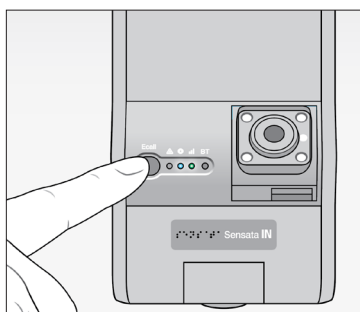
7. Tuck cable behind weather stripping, and push stripping in to secure it.



8. At the end of the bracket cable (A), connect the terminal to the smaller end of the adapter cable (F).



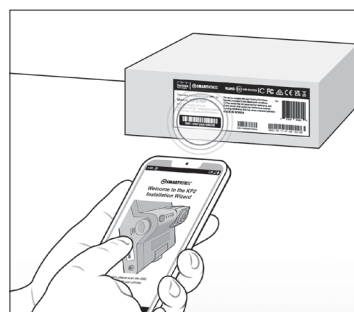
9. Plug end of OBDII adapter cable into vehicle's OBDII port. Ensure vehicle is on a flat surface for G-sensor and device calibration.



10. Turn on vehicle. Check that blue and green lights remain on after 5 minutes. If not, an error occurred. Press small, black button for 3 seconds. A beep confirms G-sensor calibration.

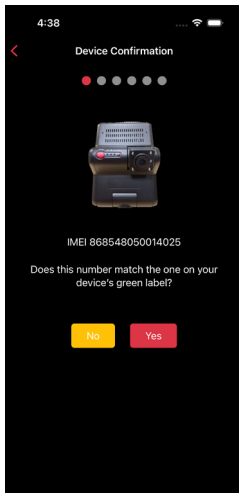


11. Scan the QR code above, and download the iOS or Android KP2 installation app.

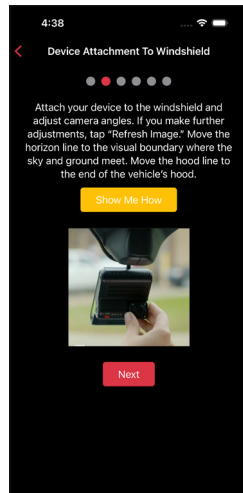


12. Open the KP2 installation app, and scan the IMEI code on the box's label. Follow the device configuration prompts.

Proceed to next page for device calibration >



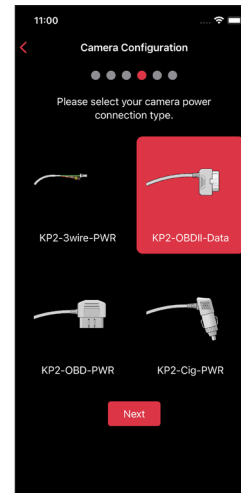
13. Ensure the IMEI code in the app matches your device's IMEI.
If there isn't a match, tap **No** and contact Sensata INSIGHTS support.
If there's a match, tap **Yes** to continue.



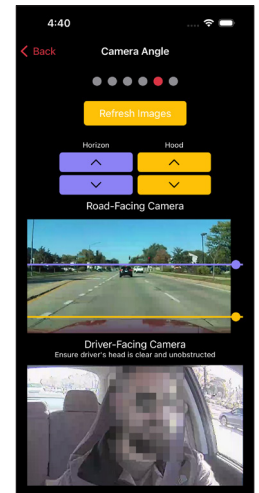
14. Read the instructions to understand more about your vehicle's "Horizon" and "Hood" lines.
Tap **Show Me How** for a brief video walk-through of the device attachment process.



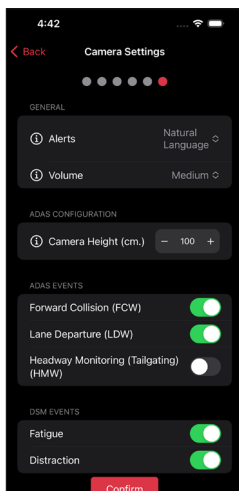
15. Select your KP2 camera configuration.
Choose the driver's side of the vehicle.
Tap **Next** to select your power connection type.



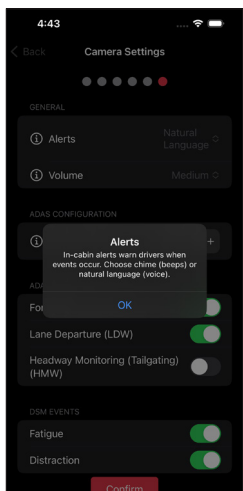
16. Select the power adapter cable you used during installation to connect your device to the vehicle.
Tap **Next** to set your vehicle's "Horizon" and "Hood" lines.



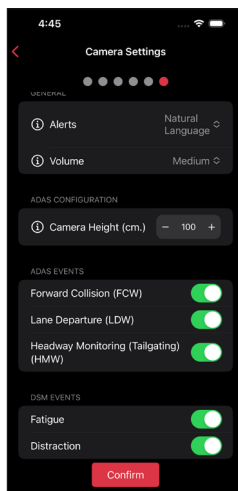
17. If you adjust either camera, tap **Refresh Images** to update road- and driver-facing camera images.
Use the arrows to adjust your vehicle's "Horizon" and "Hood" lines.
Ensure your "Hood" line is in the bottom one-fourth of your image.
Scroll down and tap **Next** to save the "Horizon" and "Hood" lines.



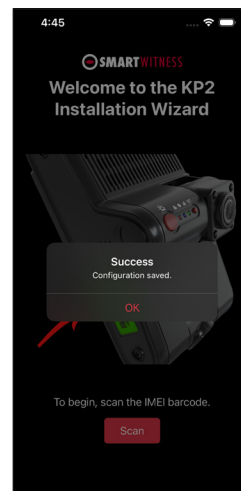
18. Choose preferences for in-cabin alerts, an alert's volume level or activation of different ADAS and DSM events.



19. If you're unaware of a setting's function, tap the **info** icon to learn more.
Pay close attention to **Camera Height**. Enter an **even interval** value (e.g., 190 cm), not an odd interval value (e.g., 205 cm, 213 cm).



20. After you've made changes and activated the appropriate features, tap **Confirm** to save your configuration.



21. On the home screen, you'll see a success message validating your saved configuration.

Congratulations! Your KP2 is now ready to go!